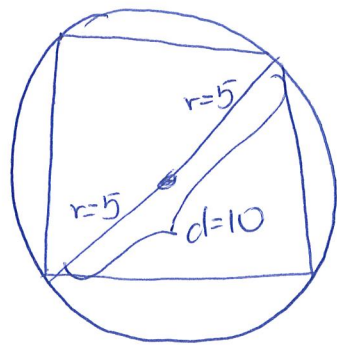


ZADANIE



$$d = a\sqrt{2}$$

$$10 = a\sqrt{2} \quad | : \sqrt{2}$$

$$\frac{10}{\sqrt{2}} = a$$

$$a = \frac{10}{\sqrt{2}} \cdot \frac{\sqrt{2}}{\sqrt{2}} = \frac{10\sqrt{2}}{2} = 5\sqrt{2}$$

$$P = a^2 = (5\sqrt{2})^2 = 25 \cdot 2 = 50$$

ZADANIE (NARTY)

x - cena nart

$80\%x$ - cena nart po I obniżce

$80\%x - 30\%(80\%x)$ - cena po II obniżce

$$0,8x - 0,3 \cdot 0,8x = 0,8x - 0,24x = 0,56x$$

$$100\%x - 56\%x = 44\%x$$

Cenę obniżono o 44%